



cyStat Sync

Microsoft Project 2000 COM Add-in Version 1.9

Installation Guide

cyStat Project Portfolio Export Tool 1.8 (H1104)

Data from the active project will be extracted and stored in a cyStat Pocket PC application file (*.cys) Cancel

Step 1 - Identify cyStat PocketPC Database File

(1) Browse

Step 2 - Pick the Project Name (cyStat Project Name Required)

(2a) Get Project Names ▼

(2b)

Step 3 - Select Sync Data

Baseline, planned and actual costs Milestone titles and dates

Baseline/planned start and finish Project percent complete

Resource usage

Step 4 - Select Milestone Control

Text1 - Use Text1 to identify tier 1 level milestones ("cyStat")

Text2 - Use Text2 to identify tier 1 level milestones ("cyStat")

Normal - Default, process all milestones (maximum of 32 milestones)

Step 5 (5) Export to Pocket PC ActiveSync will transfer the data to your destination file

Developed by:

cyWren Systems Inc.

6714 119th Avenue SE

Bellevue, WA 98006

<http://www.cywrensystems.com/>

March 17, 2002

NOTICE

Restrictions of Issue

This document from cyWren Systems, Inc, has an unlimited license for internal use by registered **cyStat** users. The contents of this document shall not be duplicated or disclosed, in whole or in any part, for purposes other than the use of its contents by the **cyStat** community.

The information in this document has been checked carefully and is thought to be entirely reliable. However, no responsibility is assumed in case of inaccuracies. cyWren Systems, Inc neither assumes any liability arising from the application of any product or service described herein nor conveys any license under their patent rights or the rights of others.

The information in this document is subject to change without notice.

Revision	Description	Date
1.0	Initial release of cyStat Sync Version 1.4	02/04/2001
2.0	Update release of cyStat Sync Version 1.5	04/29/2001
3.0	Update release of cyStat Sync Version 1.6	07/03/2001
4.0	Update release of cyStat Sync Version 1.7	08/26/2001
5.0	Update release of cyStat Sync Version 1.8	11/04/2001
6.0	Update release of cyStat Sync Version 1.9	03/17/2001

Table of Contents

1	INTRODUCTION.....	1
1.1	PURPOSE	1
1.2	SCOPE	1
1.3	EXECUTIVE SUMMARY.....	1
2	INSTALLATION.....	2
2.1	UNCOMPRESSING THE SETUP FILES	2
2.2	RUNNING THE INSTALL SCRIPT	2
3	TRANSFERRING DATA	3
3.1	FIVE STEP PROCESS	ERROR! BOOKMARK NOT DEFINED.
3.1.1	Step 1 – Project Title	<i>Error! Bookmark not defined.</i>
3.1.2	Step 2 – Data Selection.....	<i>Error! Bookmark not defined.</i>
3.1.3	Step 3 – Milestone Selection Control.....	<i>Error! Bookmark not defined.</i>
3.1.4	Step 4 – Identify Database File	<i>Error! Bookmark not defined.</i>
3.1.5	Step 5 – Initiate the Transfer	<i>Error! Bookmark not defined.</i>
4	IMPLEMENTATION	6
4.1	VISUAL BASIC 6.0.....	6
4.2	FILE MANIPULATION.....	6
5	ERROR MESSAGES	8
5.1	PROJECT TITLE ERROR.....	8
5.2	FILE NOT FOUND	8
5.3	OTHER ERRORS.....	8

1 INTRODUCTION

The purpose and scope of the Installation Guide are provided in this section of the document.

1.1 PURPOSE

The Installation Guide is designed to help the **cyStat** owner begin using the Microsoft Project 2000 synchronization COM Add-in product as quickly as possible. It covers installation, data entry, implementation and the general interface to Microsoft Project 2000.

1.2 SCOPE

This document describes the features and functions of **cyStat** Version 1.9, released on March 17, 2002.

NOTE: This COM Add-in is only supported on Microsoft Project 2000.

1.3 EXECUTIVE SUMMARY

The **cyStat** is a paperless, interactive status-reporting tool that is hosted on a handheld computer. It can be used by a single project manager or by a group of project managers. **cyStat** is most effective when used in a program management office environment.

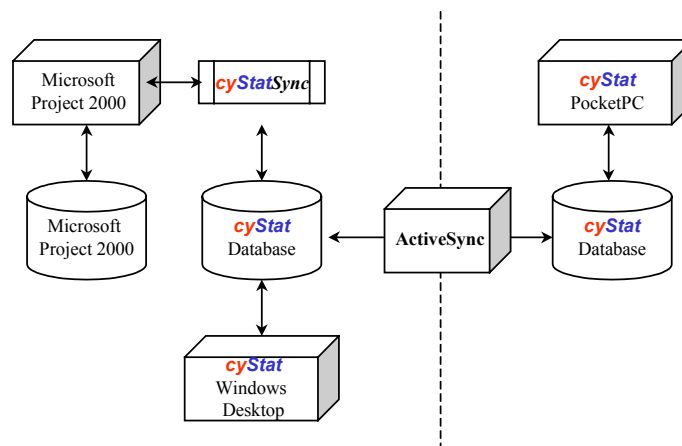


Figure 1 - Import and export process

The **cyStat Sync** COM Add-in is used to simplify data entry for Microsoft Project 2000 users. Data is extracted, analyzed and written to a **cyStat** database with minimal user interaction.

2 INSTALLATION

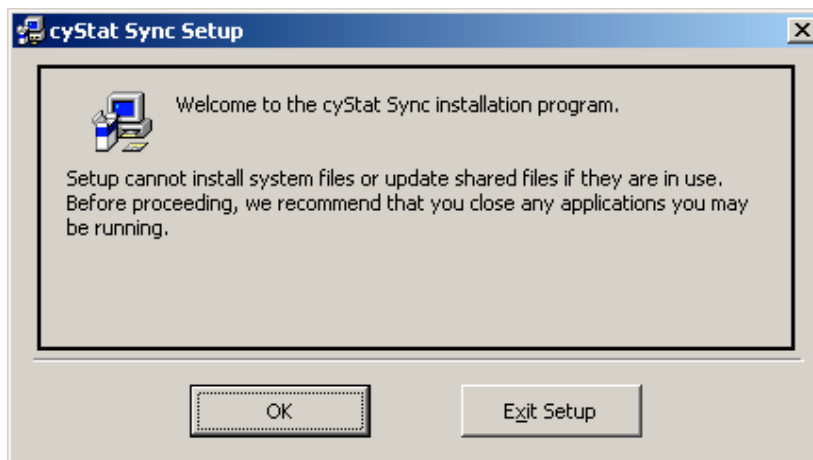
The **cyStat Sync** COM Add-in is installed on the user's desktop PC with a standard setup process.

2.1 UNCOMPRESSING THE SETUP FILES

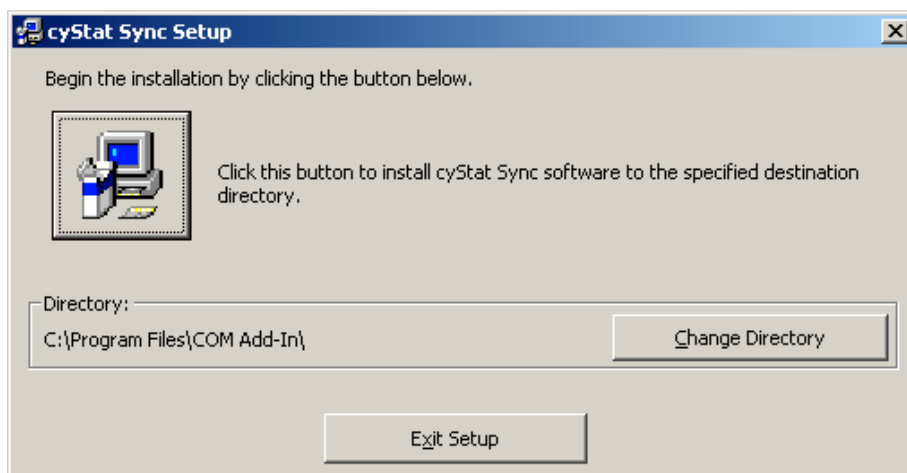
The Zip archive contains multiple files within it. The archive files must first be expanded with an unzip utility. Options include WinZip, ZipMagic, and 123Zip.

2.2 RUNNING THE INSTALL SCRIPT

The first step in the installation process is to execute the **MSP_SETUP.EXE** application that was contained in the Zip archive file. Its first dialog will prompt you to verify that all applications have been turned off prior to installing the **cyStat Sync** DLL.



The next step is to select the destination for the DLL.



This completes the installation process.

3 TRANSFERRING DATA

Data from a Microsoft Project 2000 file is analyzed and then transferred to a **cyStat** database. The current version of the COM Add-In only supports one-way transfers, i.e. data from Microsoft Project 2000 can only be sent to a **cyStat** file – the Microsoft Project 2000 file will not be updated.

3.1 FIVE STEP PROCESS

Synchronizing data between a Microsoft Project 2000 file and a **cyStat** file is relatively simple. During installation the setup application added a new menu item on the Microsoft Project 2000 Tools menu - **cyStat Sync**. This menu item will activate the dialog shown below.

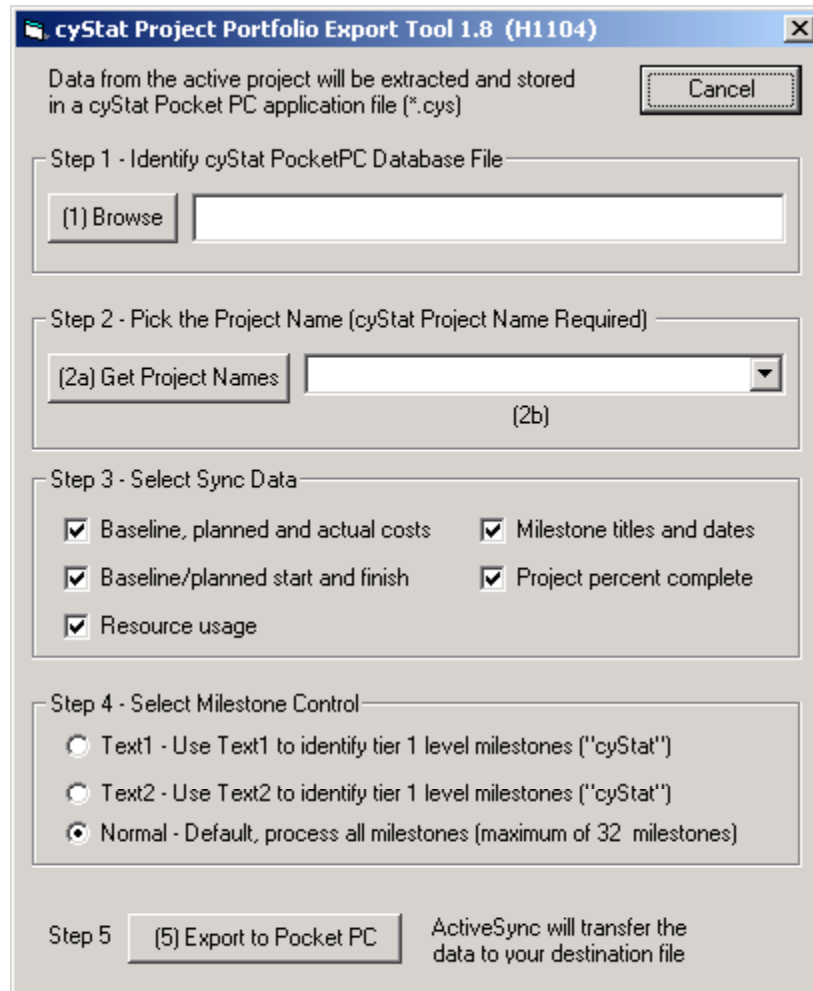


Figure 2 - cyStat Sync dialog has five steps

3.1.1 Step 1 – Identify Database File

The First step is to enter the file name of the database file. A browse button has been provide to assist the process.

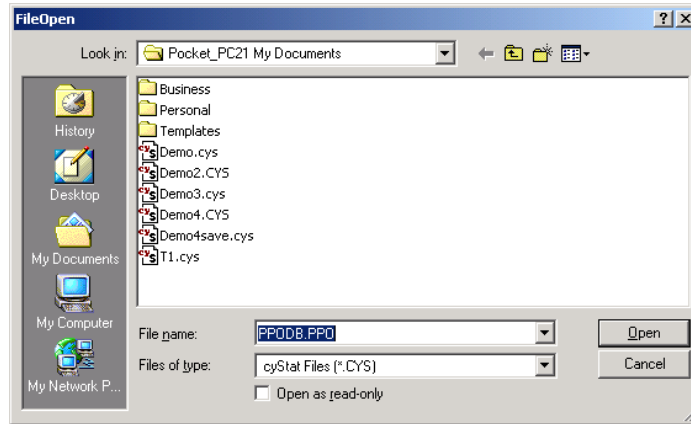


Figure 3 - Pick the desired cyStat file

3.1.2 Step 2 – Project Title

The data from the Microsoft Project 2000 file must correspond to an existing **cyStat** project.

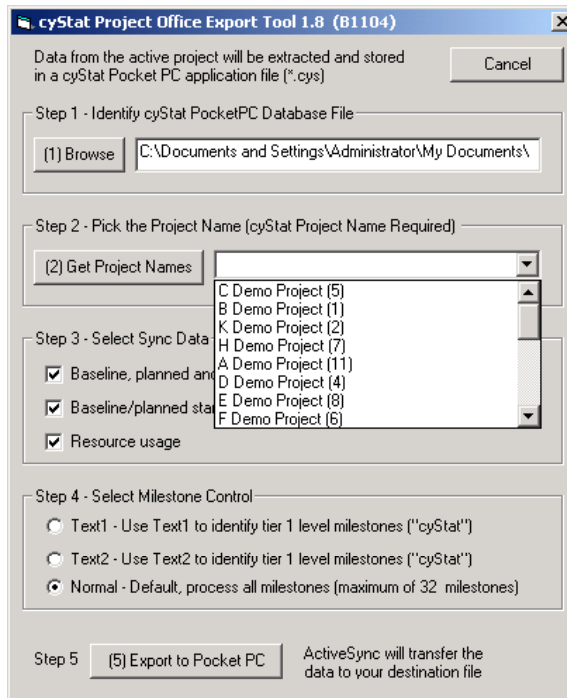


Figure 4 - Pick the cyStat project that corresponds to the Microsoft Project 2000 file

- ◆ (2a) *Get Project Names* button will read your selected file and populate the combo box with valid **cyStat** project names from your database

- ◆ (2b) Pick the appropriate Project name from the drop down list.

The name must match one of the projects in the **cyStat** database..

3.1.3 Step 3 – Data Selection

Select the data to be transferred from the Microsoft Project 2000 file. Available options:

- Cost information – Baseline, Planned and Actual
- Project Start and Finish Dates – Baseline and Planned
- Milestones – Titles, Due Dates and Completed Dates
- Project Percent Complete – 0 to 100%
- Resources (full time)

3.1.4 Step 4 – Milestone Selection Control

The **cyStat** database and application support high level milestones, which are sometimes called tier 1 milestones. In keeping with the philosophy of information filtering of only the most important project status information, **cyStat** limits the number of milestones in any given project to thirty-two (32).

A Microsoft Project 2000 file may contain many milestones that are used by the project manager to track important events. A method has been provided to filter milestones in a Microsoft Project 2000 file. Three options are used to control the transfer of milestones from Microsoft Project 2000 to the **cyStat** database:

1. **Text1** – A milestone will be transferred to the **cyStat** database, if the string “cyStat” is found in the Text1 attribute of the Microsoft Project 2000 milestone.
2. **Text2** – A milestone will be transferred to the **cyStat** database, if the string “cyStat” is found in the Text2 attribute of the Microsoft Project 2000 milestone.
3. **Normal** – The synchronization logic will assume that the Microsoft Project 2000 file contains only high level milestones (limited to the first 32 milestones).

3.1.5 Step 5 – Initiate the Transfer

The final step is to pick the *Export to Pocket PC* button, which starts the process. It requires no further user interaction and completes quickly.

4 IMPLEMENTATION

Background information on the implementation of the Microsoft Project 2000 COM Add-In is provided to help the user understand the limitations of this first version of the **cyStat Sync** synchronization process.

4.1 VISUAL BASIC 6.0

The **cyStat Sync** COM Add-In assumes that the Microsoft Project 2000 file contains a single project. It analyzes and processes data for the current active project.

```
Set Application = CreateObject("MSProject.Application")
With Application.ActiveProject
    pBCost      = .ProjectSummaryTask.BaselineCost
    pCost       = .ProjectSummaryTask.Cost
    pACost      = .ProjectSummaryTask.ActualCost
    For Each task In .Tasks
        ...
    Next task
End With
```

Dates are analyzed for validity. If the baseline has not been saved in the Microsoft Project 2000 file, then the **cyStat Sync** COM Add-In logic will attempt to copy the planned date to the baseline.

```
If IsDate(.ProjectSummaryTask.Start) Then
    pPStart = .ProjectSummaryTask.Start
Else
    pPStart = Date
End If
If IsDate(.ProjectSummaryTask.BaselineStart) Then
    pBStart = .ProjectSummaryTask.BaselineStart
Else
    pBStart = pPStart
End If
```

Milestones are processed for each task object in the current active project.

4.2 FILE MANIPULATION

The transfer process has three steps:

1. Data from the Microsoft Project 2000 file is analyzed and prepared for the conversion.

2. The **cyStat** database is copied to a temporary location and analyzed (the title of the project - Step 1) must be found in the **cyStat** database.
3. The **cyStat** database is then rewritten with new data from the Microsoft Project 2000 file.

The name of the temporary file is:

C:\TMPPPO.PPO

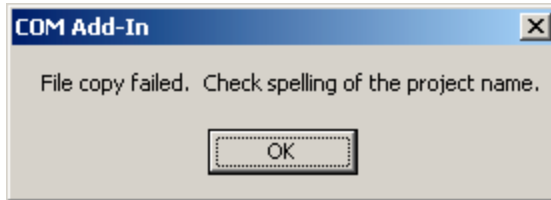
If the transfer fails or the user wants to “undo” the synchronization, then this file simply needs replace the **cyStat** database file in the Pocket PC folder.

5 ERROR MESSAGES

The following error messages are displayed.

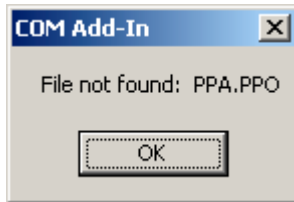
5.1 PROJECT TITLE ERROR

The project specified in Step 2 was not found in the **cyStat** database file. Check the spelling and try again.



5.2 FILE NOT FOUND

The **cyStat** database file was not in the location specified or the file does not exist. Check the spelling or browse for the file.



5.3 OTHER ERRORS

For help inquiries and support contact information please refer to the user's manual included with the software or contact cyWren Systems, Inc. support staff at <http://www.cywrensystems.com>.